

Community Resilience Building

getting on the right path early...



(Photo: Bill Dickinson/flickr/cc)

Adam Whelchel, PhD

Director of Science/The Nature Conservancy

awhelchel@tnc.org

2017 Legislative Agriculture Chairs Summit

Architecture

Resilience - Rural Communities
Context and Challenges
Opportunities



NOAA



NFPA



NOAA

Resilience – Rural Communities

...the capacity or ability to **anticipate**, **adapt**, and **recover** quickly from difficulties and misfortune; toughness, fortitude, strength...

Proactive planning results in better coordination and decisions that avoid future costs



Resilience – Rural Communities

□ **Importance of the Issue for communities**

- Implications for Residents
- Business Continuity and Growth
- Public Services and Amenities
- Quality of Life
- Environment

Proactive planning results in better coordination and decisions that avoid future costs

Architecture

Resilience – Rural Communities
Context and the Challenges
Opportunities



NOAA



NFPA

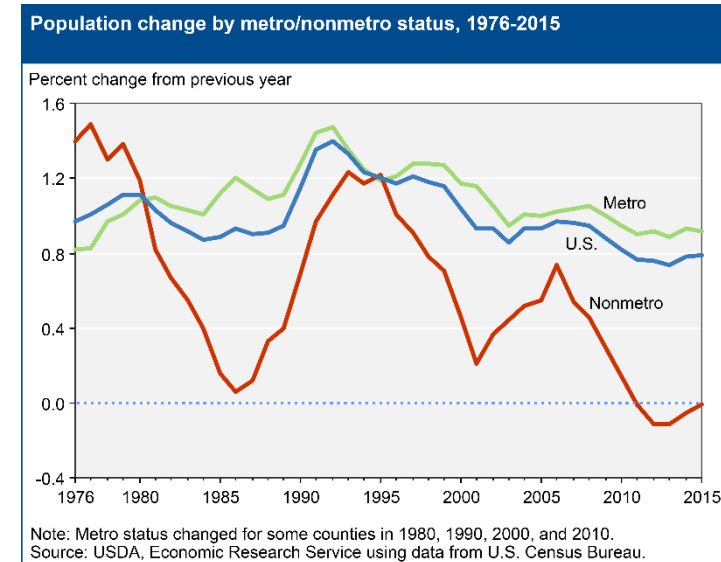
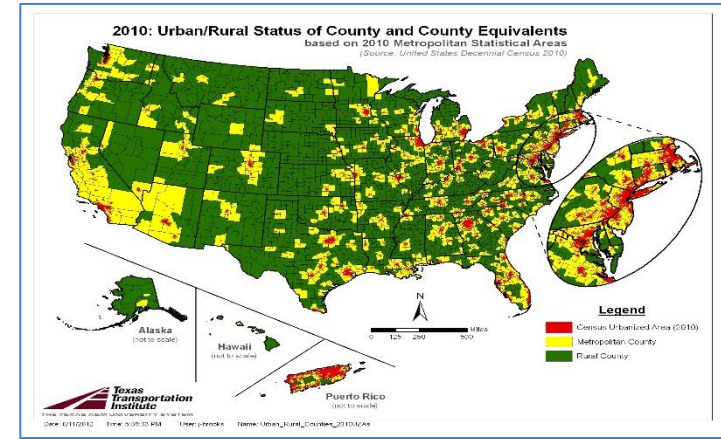


NOAA

Context – Rural Communities

Rural landscape – forests, farms, rangelands, and people that love where they live and respect/care for the land...

Only 14% of U.S. residents (46.2 m (2015)) live in non-metropolitan counties - 72% of nation's land area...



Common and Shared Challenges

- **Infrastructure/Industry/Business**
- **Housing**
- **Public Health and Safety**
- **Environment** - natural resources; land-use, access
- **Property Values & Tax Base**
- **Population** - seasonal/permanent, renters, elderly
- **Economic Growth** - future assets/costs/capital

“Not-so-Shared” Challenges

- **Dispersed Assets**
 - Housing, Facilities, Infrastructure, etc.
 - Aggregated Values Per Area
- **Less Relevance** (shrinking pop/attention)
- **Inequity** (demographics, politically, socially)
 - “Decisions made by others...”

“Forgotten Survivors”



Architecture

Resilience – Rural Communities
Context and the Challenges
Opportunities



NOAA



NFPA



NOAA

Getting to Resilient Rural Communities

Goal:

Create collaborative actions across/between communities to ensure a **local and regional approach** to resilience via **strong and growing partnerships?**

...connecting the pieces for a more resilient whole...



By linking knowledge/expertise with process, people make better decisions that improve resilience and build community...



Community Resilience Building WORKSHOP GUIDE



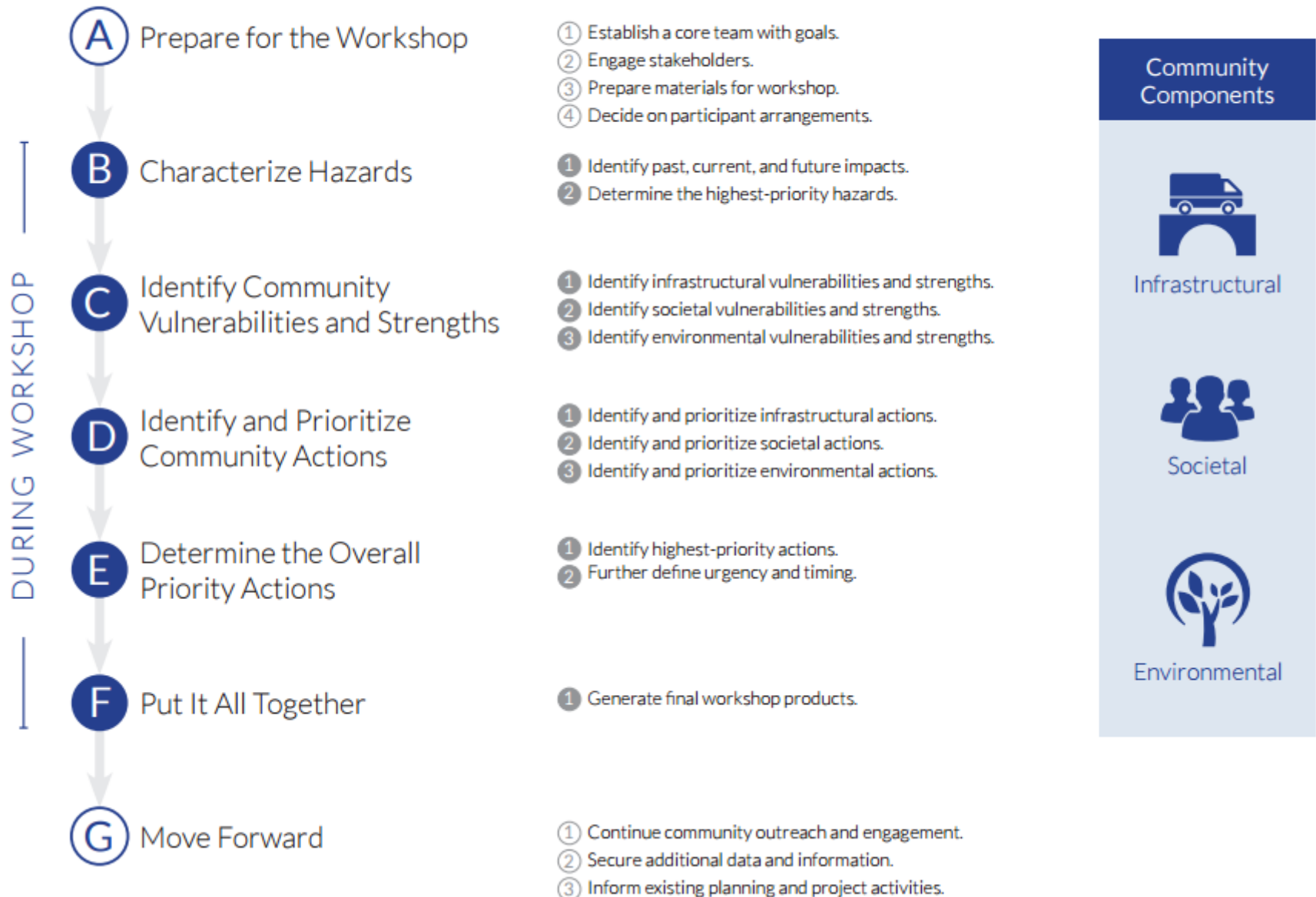
www.CommunityResilienceBuilding.com

Community Resilience Building WORKSHOP GUIDE

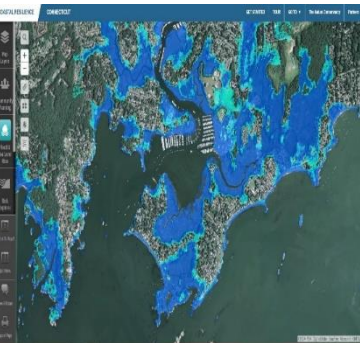
- ✓ **Tried, tested and trusted by 45 communities over last decade...**
- ✓ **“Anywhere at Any Scale” approach...**
 - Rural/Urban; Local/Regional
- ✓ **Unique community-driven process**
 - Whole Community – all voices...
 - Tornados, drought, flooding, heat, wildfires, hurricanes, etc.

www.CommunityResilienceBuilding.com

Overview of the Process (Steps & Tasks)



Community Resilience Building WORKSHOP GUIDE



Community Resilience is all about the people

The Way Forward...

- Recognize the **knowledge and expertise** within and across rural communities...
- **Genuinely engage** rural communities in dialogue/resource allocations as equal partners...
- Cultivate **collaborative leadership** (urban-rural) through a committed process...
- Turn “forgotten survivors” into **champions**...

Thank You!



(Photo: Bill Dickinson/flickr/cc)

Adam Whelchel, PhD

awhelchel@tnc.org

Adamwhelchel.com

@AdamWhelchel