

An aerial photograph showing a winding river flowing through a landscape of agricultural fields. The fields are in various stages of harvest, with some showing rows of crops and others appearing as brown earth. The surrounding trees have vibrant autumn foliage in shades of orange, red, and yellow. A few farm buildings and a white silo are visible near the river. The overall scene is a mix of natural beauty and human agriculture.

AGRICULTURE

Ensuring the Chesapeake Bay's Clean Water

2017 Legislative Agricultural Chairs Summit

**Baton Rouge, LA
January 7, 2017**

**Ann Swanson
Executive Director
Chesapeake Bay Commission**

Chesapeake Bay Commission

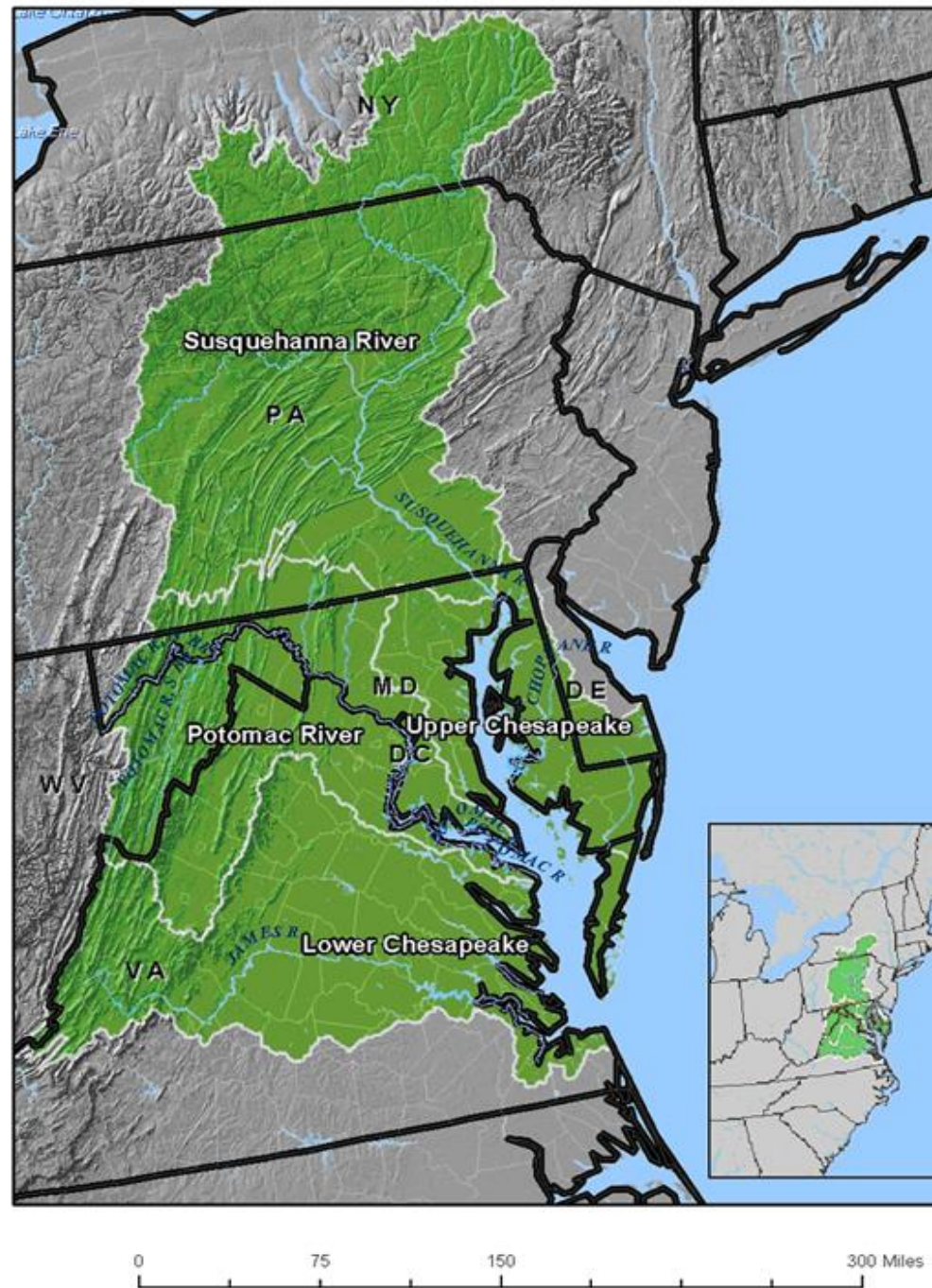
- Tri-State Legislative Commission
 - Pennsylvania, Maryland, & Virginia
- Established by state law
- 7 Members Each (21 total)
 - 2 Senate
 - 3 House
 - 1 Administration (Cabinet-level)
 - 1 Citizen



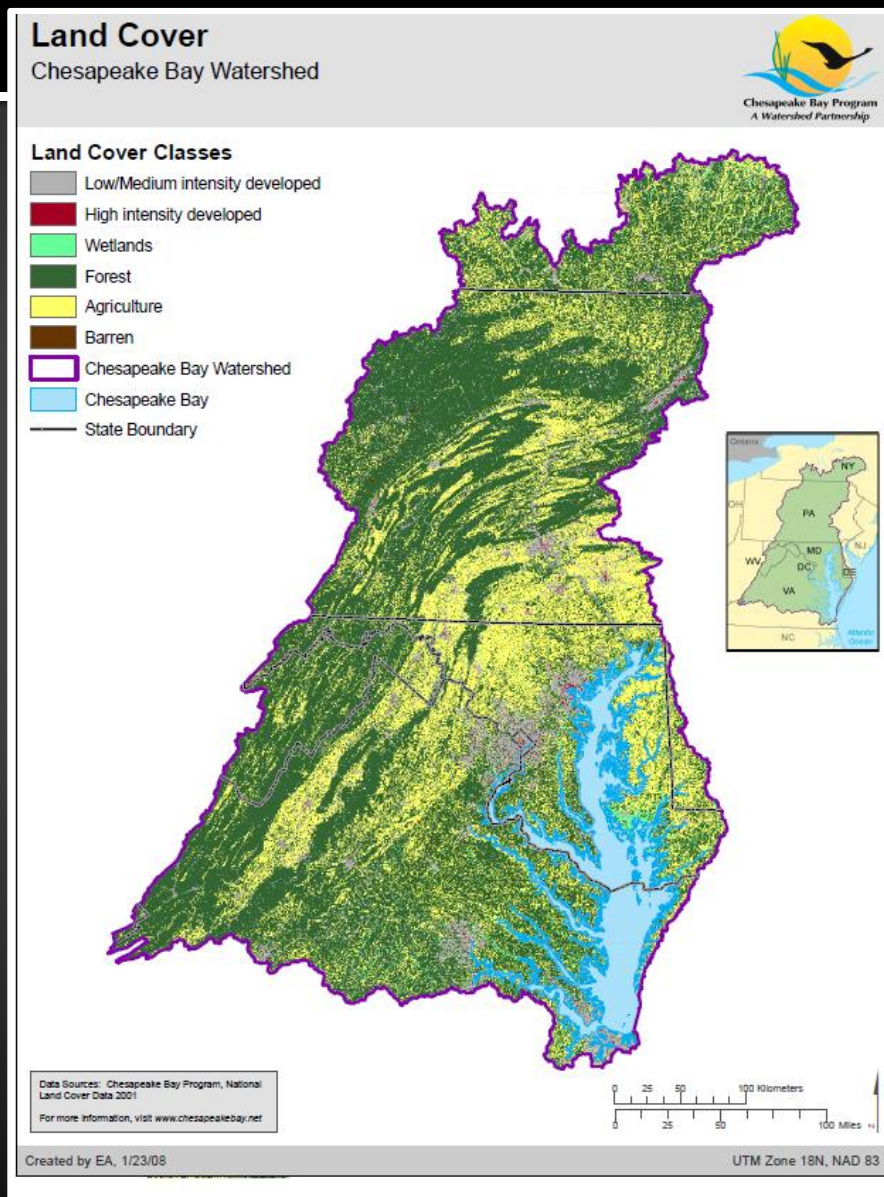
LOCATION

THE CHESAPEAKE BAY is our nation's largest, most productive estuary.

6 States
Washington D.C.



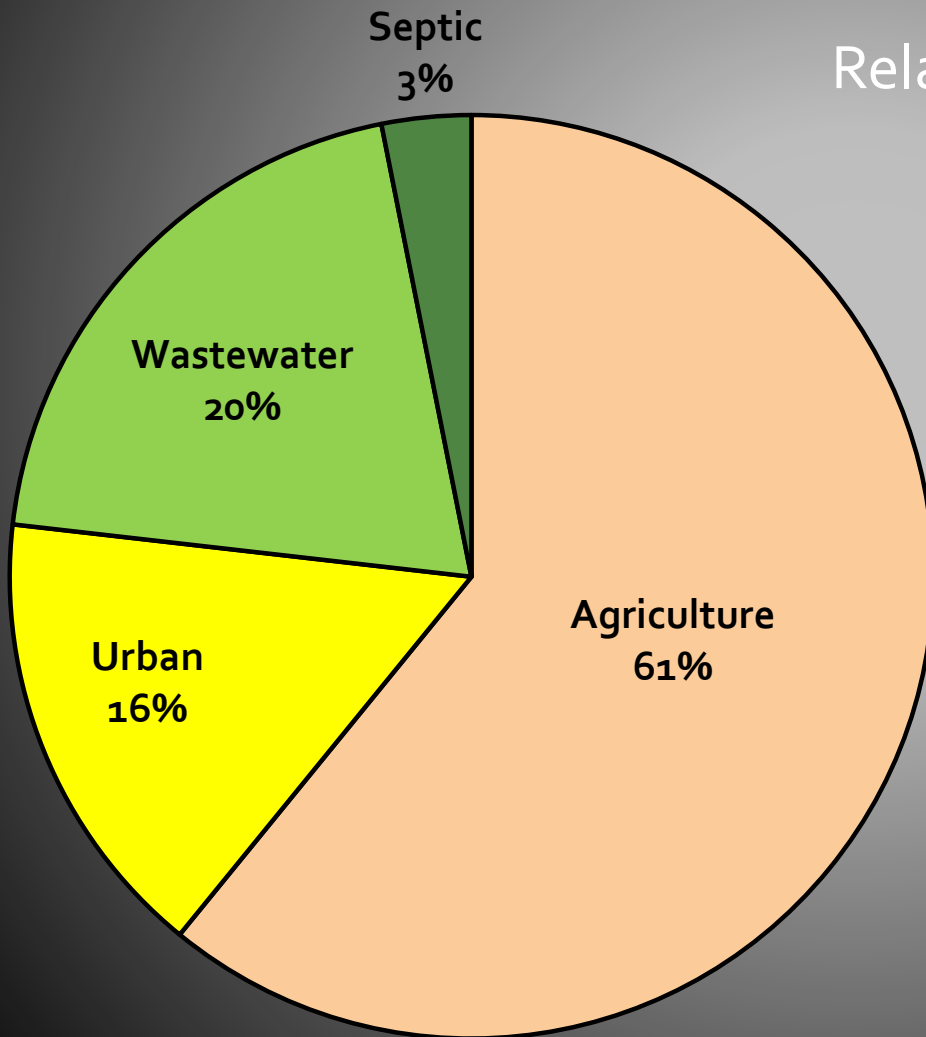
Agriculture in the Chesapeake Bay



- 87,000 farms
- 8.5 million acres cropland (~ 22%)
- PA = Top 4 for dairy and eggs
- DE, MD, VA = Top 10 for broilers
- VA = Top 5 for turkeys

*Profitable Ag and
Clean Water!*

Agriculture is Central to the Chesapeake Bay Restoration



Relative N Reductions for Bay TMDL

States are relying on agriculture to achieve roughly two-thirds of the nutrient reductions needed to achieve the Chesapeake Bay TMDL.

Maryland 41%

Virginia 45%

Pennsylvania 75%

3 KEY INGREDIENTS

Successful State Agriculture Programs

1. STATE AG COST-SHARE PROGRAMS

- Significant annual DEDICATED funding levels
- Target priority practices & watersheds

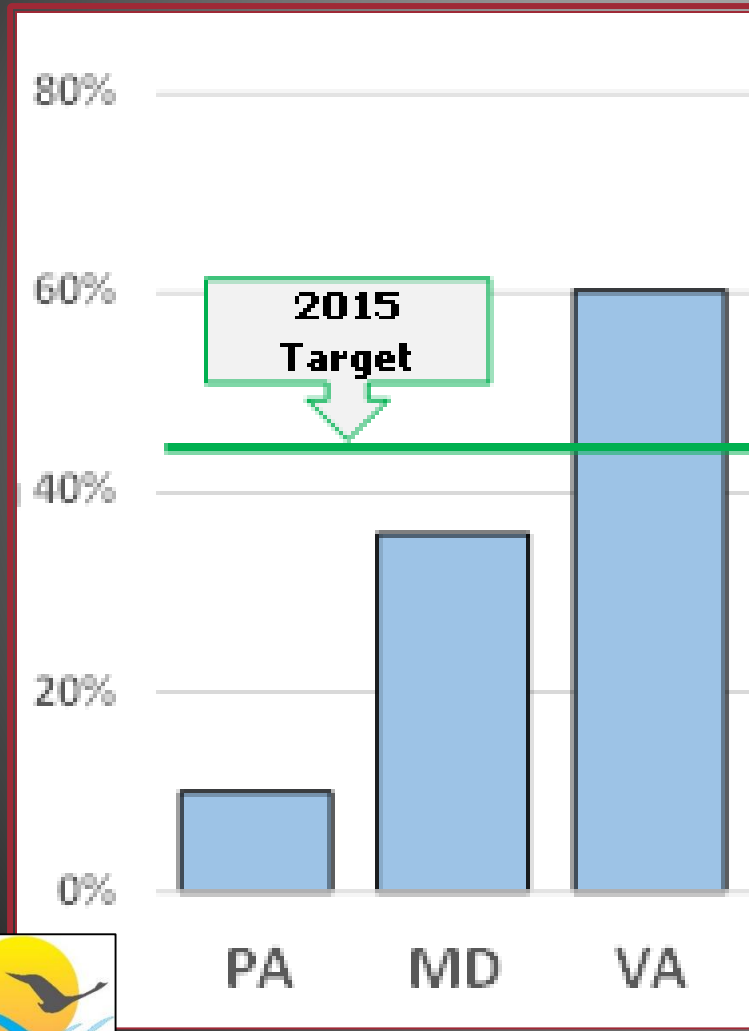
2. REGULATORY PROGRAMS

- Good coverage, practices, compliance

3. VOLUNTARY INCENTIVE PROGRAMS

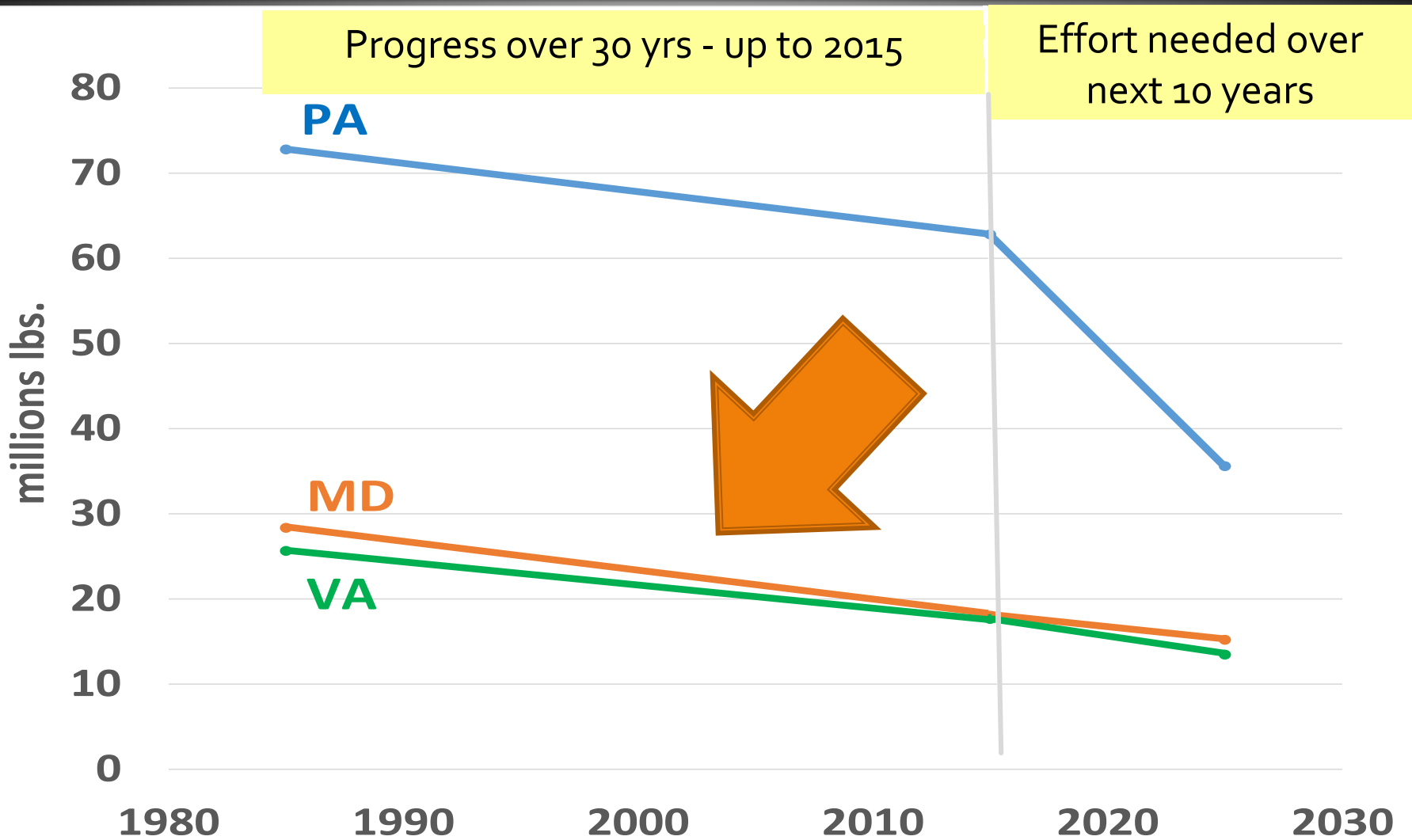
- To supplement regulations

% of Nitrogen Reduction Goal Achieved

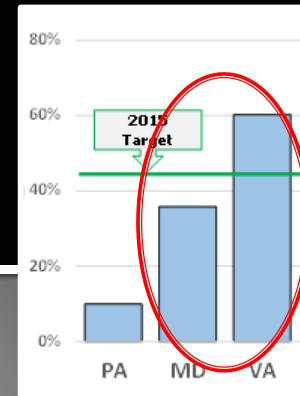


Maryland and Virginia are on track to meet their 2016 TMDL goals

Agricultural Nitrogen Loads Historic and Planned



Funding Matters



MARYLAND

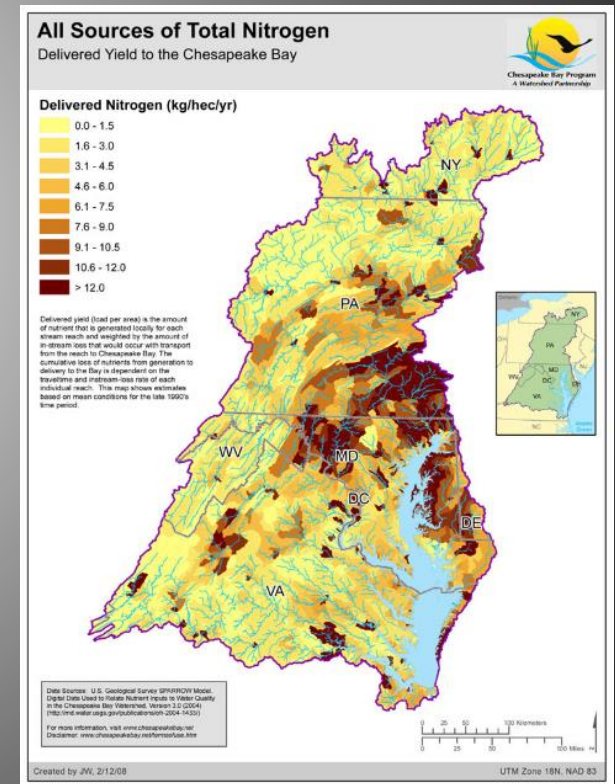
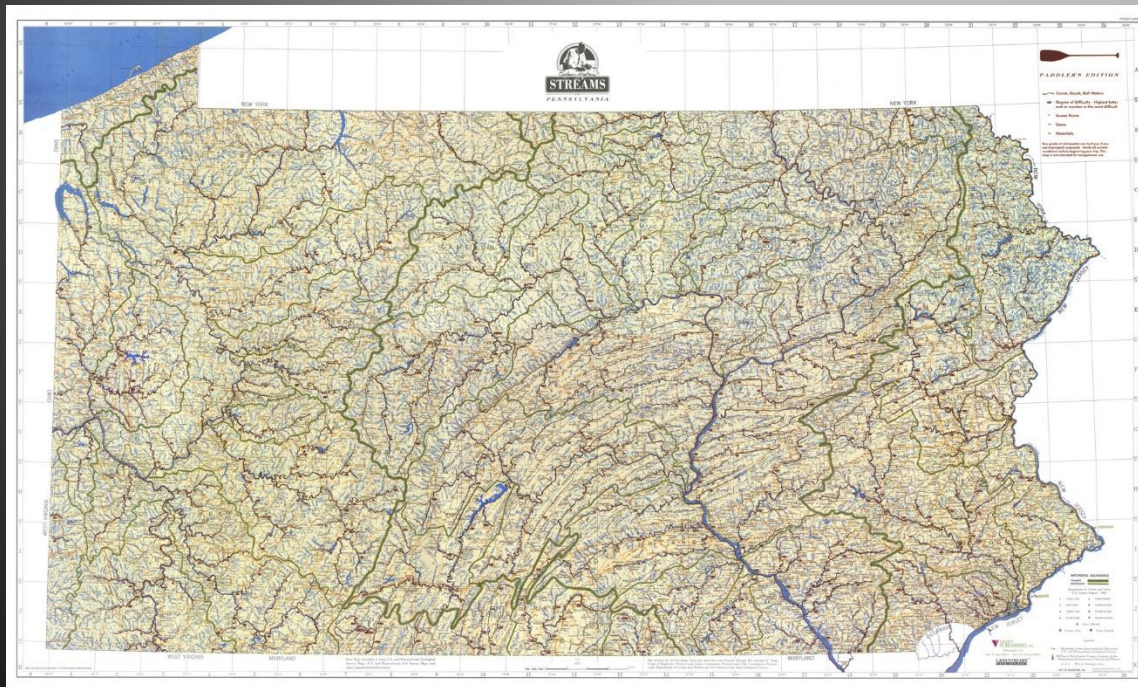
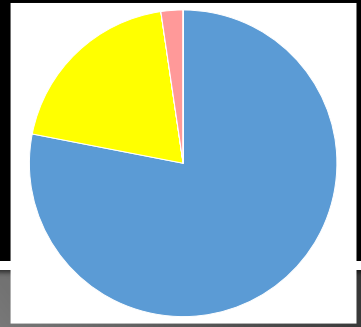
- **Bay Restoration Fund**
 - \$139 M FY15
 - Sewer bill surcharge
 - WWTPs, septic, ag
- **Bay 2010 Trust Fund**
 - \$39 M FY16
 - Portion of rental car and fuel taxes
 - Non-point source, incl. ag (MACS -\$19M FY16)
- **Water Quality Bonds**

VIRGINIA

- **Water Quality Improvement Fund**
 - \$59 M FY17
 - 10% of GF surplus
 - WWTP and NRCF
- **Natural Resource Commitment Fund**
 - \$62 M FY17
 - WQIF, real estate recordation fee
 - Technical assistance and cost-share
- **Ag Tax Credit Program**

Funding

- Need for Bay: \$378.3 M annually
- Have: \$127M annually statewide





A Dedicated Fund for PENNSYLVANIA?

Proposed Large Water Users Fee



HB 2114

- 1/100 cent/gallon withdrawals greater than 10,000 gallons a day.
- 1/10 cent/gall on consumptive uses greater than 10,000 gallons a day.
- Revenue estimates are projected to be \$245 million a year.
- Will address 19,000 miles of impaired waters under Federal Clean Water Act Section 303(d).

It's about protecting home



Ann Swanson
Executive Director
Chesapeake Bay Commission
aswanson@chesbay.us