



*State Agriculture and Rural Leaders Legislative Ag Chairs Summit XII*

# **Learning from a Decade of Success in Ag Diversification and Rural Development**

*June 8, 2013*

Barry L. Denk, Director  
(717) 787-9555  
[www.rural.palegislature.us](http://www.rural.palegislature.us)



# **The Center for Rural Pennsylvania**

**A bipartisan, bicameral legislative agency that serves as a resource for rural policy within the Pennsylvania General Assembly.**

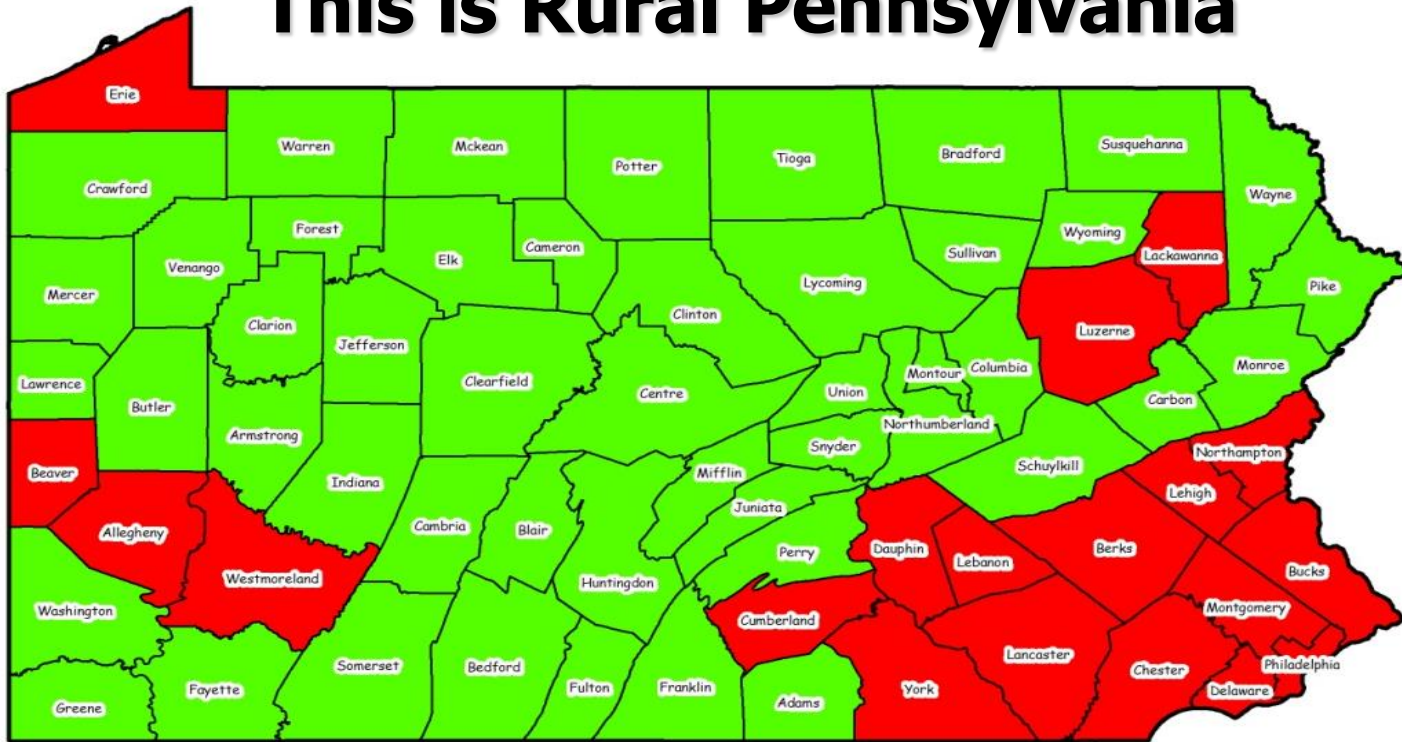
## **Created and Amended by**

- **Rural Pennsylvania Revitalization Act, Act of 1987, P.L. 163, No. 16**
- **Rural Pennsylvania Revitalization Act – Board of Directors and Grants, Act of Oct. 9, 2009, No. 52 Cl. 12**

## **Mandates**

- **Administer grants to conduct research on rural conditions.**
- **Maintain a database on rural conditions and needs.**

# This is Rural Pennsylvania



- 3.44 million rural residents (28% of Pennsylvania's population).
- 75% of Pennsylvania's land area.
- Every Pennsylvania county has rural components except Philadelphia and Delaware.
- Pennsylvania has the nation's third largest rural population.
- Prior to definition change with 2000 Census, PA was #1.

# Board of Directors

11-member board includes representatives from:

- Pennsylvania State Senate Majority and Minority Caucuses
- Pennsylvania House of Representatives Majority and Minority Caucuses
- Pennsylvania State University
- Pennsylvania State System of Higher Education
- University of Pittsburgh
- Northeast Regional Center for Rural Development
- Governor's appointees representing Pennsylvania Rural Electric, Pennsylvania Farm Bureau or Pennsylvania State Grange

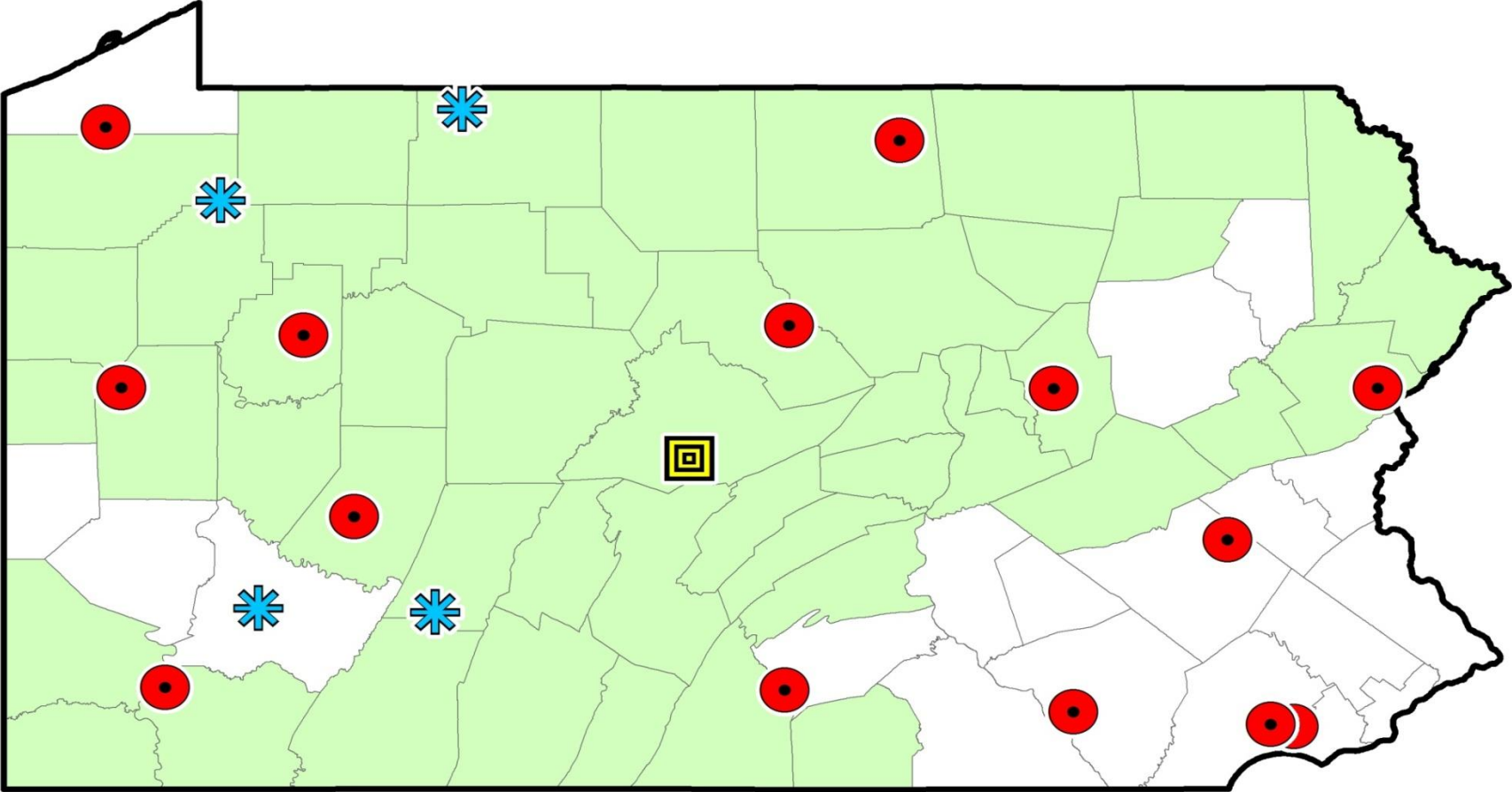
# Center Funding and Staff

The Center is line-item funded in the state budget under the Legislature.

- 2012-2013 = \$875,000
- 2011-2012 = \$719,485
- 2010-2011 = \$870,000
- 2009-2010 = \$879,000
- 2008-2009 = \$1,100,000

There are five FT staff: Director, Senior Policy Analyst, Program Manager for Grants, Communications Manager, and Administrative Assistant. In its annual research grant program, the Center has 10-15 researchers under contract.

# University Research Partners



-  Urban Counties
-  Rural Counties
-  PA State System of Higher Education
-  Regional Campuses of U. of Pittsburgh
-  Penn State University

# Center's Applied Practical Research

Welcome Back Downtown:  
A Guide to Revitalizing  
Pennsylvania's Small Towns



The Center for  
*Rural Pennsylvania*  
A Legislative Agency of the Pennsylvania General Assembly

Wealth Transfer in Pennsylvania



An Evaluation of Pennsylvania's  
Main Street Programs

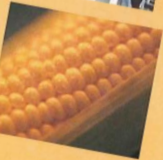


The Center for  
*Rural Pennsylvania*  
A Legislative Agency of the Pennsylvania General Assembly



Starting and Strengthening  
Farmers' Markets  
in Pennsylvania  
3rd Edition

A GUIDE TO HELP FARMERS, CONSUMERS AND  
COMMUNITIES REAP THE BENEFITS OF  
MARKETING METHODS



The Center for  
*Rural Pennsylvania*  
A Legislative Agency of the Pennsylvania General Assembly

An Examination of Mobile Homes  
in Rural Pennsylvania

The Center for  
*Rural Pennsylvania*  
A Legislative Agency of the Pennsylvania General Assembly

- Assessment of Pennsylvania Wine Industry
- Recruitment & Retention of Firefighters
- State Police Coverage of Municipalities
- Broadband Internet Use
- Analysis of Rural County Veterans Affairs Offices
- Impact of the Hotel Tax
- Impact of Marcellus Gas Drilling on Drinking Water
- Role of Community Banks in Rural Economic Development
- Inventory of Pennsylvania's Historic Barns
- Small Business Owners and Succession Planning

# Center's Database Research

- Pennsylvania's most comprehensive database on rural trends and conditions
- Database includes state and federal agencies
- Includes data on all 67 counties and municipalities
- Data available on Center's website or via email/phone
- Affiliate of Pennsylvania's State Data Center

	Pennsylvania	Rural Counties	Urban Counties	Adams	Allegheny	Armstrong	Beaver	Bedford	Berks	Blair
Total Population, 1960	11,319,366	3,050,513	8,268,853	51,906	1,628,587	79,524	206,948	42,451	275,414	137,229
4 Years Old, 1960	1,187,954	316,447	871,507	5,863	172,477	8,429	23,841	4,757	25,461	13,114
9 Years Old, 1960	1,101,757	303,819	797,938	5,579	160,642	8,284	21,821	4,332	24,022	13,114
14 Years Old, 1960	1,005,379	289,468	715,911	5,017	140,618	7,910	19,320	4,179	22,855	12,114
19 Years Old, 1960	799,536	236,290	563,246	4,429	107,128	5,881	14,321	3,567	17,725	9,114
24 Years Old, 1960	615,299	169,518	445,781	3,565	85,006	3,922	11,192	2,479	14,033	6,114
29 Years Old, 1960	445,577	144,855	300,722	3,024	61,561	4,198	12,475	2,441	15,047	7,114
34 Years Old, 1960	347,440	104,636	242,804	2,325	46,245	3,256	9,382	1,835	11,021	5,114
39 Years Old, 1960	262,350	80,839	181,511	1,790	35,648	2,488	7,088	1,381	8,511	4,114
44 Years Old, 1960	193,136	60,291	132,845	1,353	26,965	1,844	5,104	966	6,130	3,114
49 Years Old, 1960	141,114	44,814	96,300	1,014	20,128	1,384	3,824	681	4,511	2,114
54 Years Old, 1960	101,114	31,814	69,300	714	14,128	1,014	2,824	511	3,211	1,614
59 Years Old, 1960	71,114	22,814	48,300	514	10,128	714	2,024	361	2,311	1,114
64 Years Old, 1960	51,114	16,814	34,300	364	7,128	514	1,424	261	1,611	814
69 Years Old, 1960	36,114	11,814	24,300	264	5,128	364	1,024	181	1,111	514
74 Years Old, 1960	26,114	8,814	17,300	194	3,628	264	724	131	811	364
79 Years Old, 1960	19,114	6,314	12,800	144	2,628	194	524	91	511	264
84 Years Old, 1960	14,114	4,814	9,300	104	1,928	144	384	61	311	194
89 Years Old, 1960	10,114	3,314	6,800	74	1,428	104	284	41	211	144
94 Years Old, 1960	7,114	2,314	4,800	54	1,028	74	204	31	151	104
99 Years Old, 1960	5,114	1,814	3,300	44	728	54	144	21	111	74

## A Comparison of Rural and Urban Middle-Income Households

### Introduction

This study compares Pennsylvania's rural and urban middle-income households, which are defined as those with yearly incomes of \$37,501 to \$57,000. Using the 2006 and 2007 Rural Pennsylvania Current Population Survey (RuralPA-CPS), the Center for Rural Pennsylvania identified these households as middle-income since they were in the middle one-fifth of the Pennsylvania income distribution.

The analysis included five factors affecting rural and urban middle-income households: demographics, employment, health insurance, housing and educational attainment. The analysis showed that for each of these factors, a gap existed between rural and urban households. Rural middle-income households, for example, were more likely to have children and be less racially diverse than urban middle-income households. Rural households also had lower levels of educational attainment.

## A 60-Year Perspective on Pennsylvania's Rural Population

March 2009

How has Pennsylvania's rural population changed over the past 30 years and what kind of changes might it expect in the future? A 60-year analysis of population data and population projections by the Center for Rural Pennsylvania revealed that Pennsylvania's rural population is likely to grow slowly and unevenly, and that the average age of its residents will increase.

### Methods

County-level data on Pennsylvania's rural population was used for the 30-year time period from 1970 to 2000, and used county-level population and county-level data by race from 1970 to 2000. County-level data from 2010 to 2030 is projected, that accounts for the migration (in- and out-migration). More information is available on the website at <http://www.ruralspa.org>.

### Findings

Rural Pennsylvania Population Change 1970 to 2000

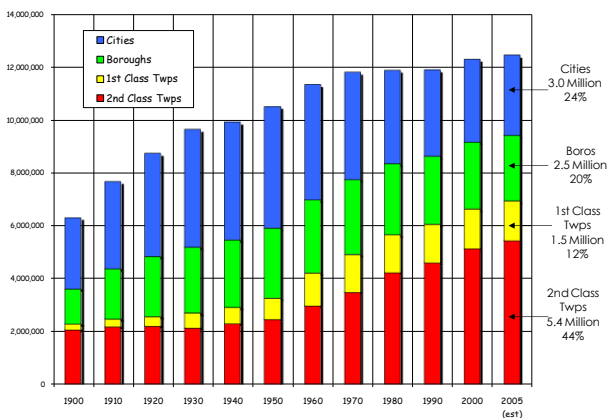
- In 1970, Pennsylvania's 48 rural counties were home to 3.05 million residents. By 2000, that number increased to 3.39 million, an increase of 11 percent.
- Rural Pennsylvania experienced uneven population growth over this period. Adams, Berks, Centre, Monroe and Pike counties accounted for 73 percent of this growth and 14 counties lost population.
- Rural population change was significantly correlated with changes in the number of minorities, employment, and housing units. This suggests that, as population increased, so did the number of minorities, employment and the number of new homes.
- The population increase was driven by a combination of births and in-migration. During this period, there were 227,900 more births than deaths. Rural Pennsylvania also experienced three migration waves over the 30-year period. During the first wave, from 1970 to 1980, rural counties gained about 92,200 new residents; during the second, from 1980 to 1990, rural counties lost about 110,300 residents because of out-migration; and during the third, from 1990 to 2000, rural counties gained nearly 101,800 people. The net increase was 74,700 people.



## Survey of Small-Town Police Departments

**Introduction**  
Among Pennsylvania's nearly 2,600 municipalities, 1,124 have police departments. Fifty-six percent of these police departments serve municipalities with less than 10,000 residents and provide services to nearly 872,000 residents. To better understand the issues facing these "small-town" police departments, the Center for Rural Pennsylvania surveyed police chiefs in 10,000 residents. Approximately 1,124 municipalities responded to the survey.

**Number of Police Departments**  
In 2008, there were 1,124 municipal police departments in Pennsylvania, according to the GCLCS. These departments provide policing services to 53 percent of the state's municipalities, or 49 percent of the state population. Forty-seven percent of the state's municipalities, or 20 percent of the state population, do not have a police department.



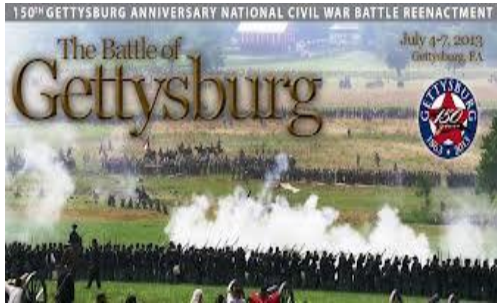


# Impacts and Outcomes



## Potter County Education Council

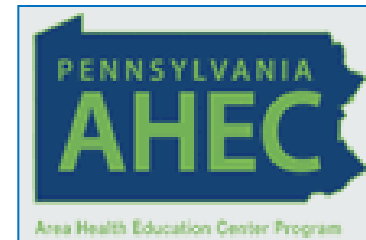
Connecting you to the World through Education



## Heritage Tourism

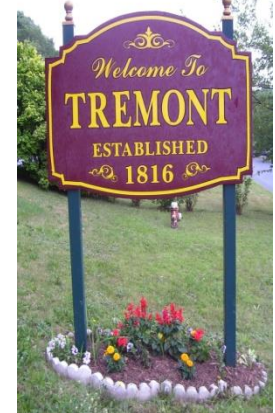


## Pennsylvania Main St./Elm St. Programs



Link to Learn and Distance Education

**PA Blueprints:  
Best Land Use Principles & Results**



# Current Projects



Marcellus Shale  
Community  
Impact Study

Charter Schools and Financial Impact on  
Rural and Non-Rural  
School Districts



Rural Youth Career, Education  
and Residential  
Aspirations



Status of Municipal  
Pension Funds



Population Projections  
Through 2040



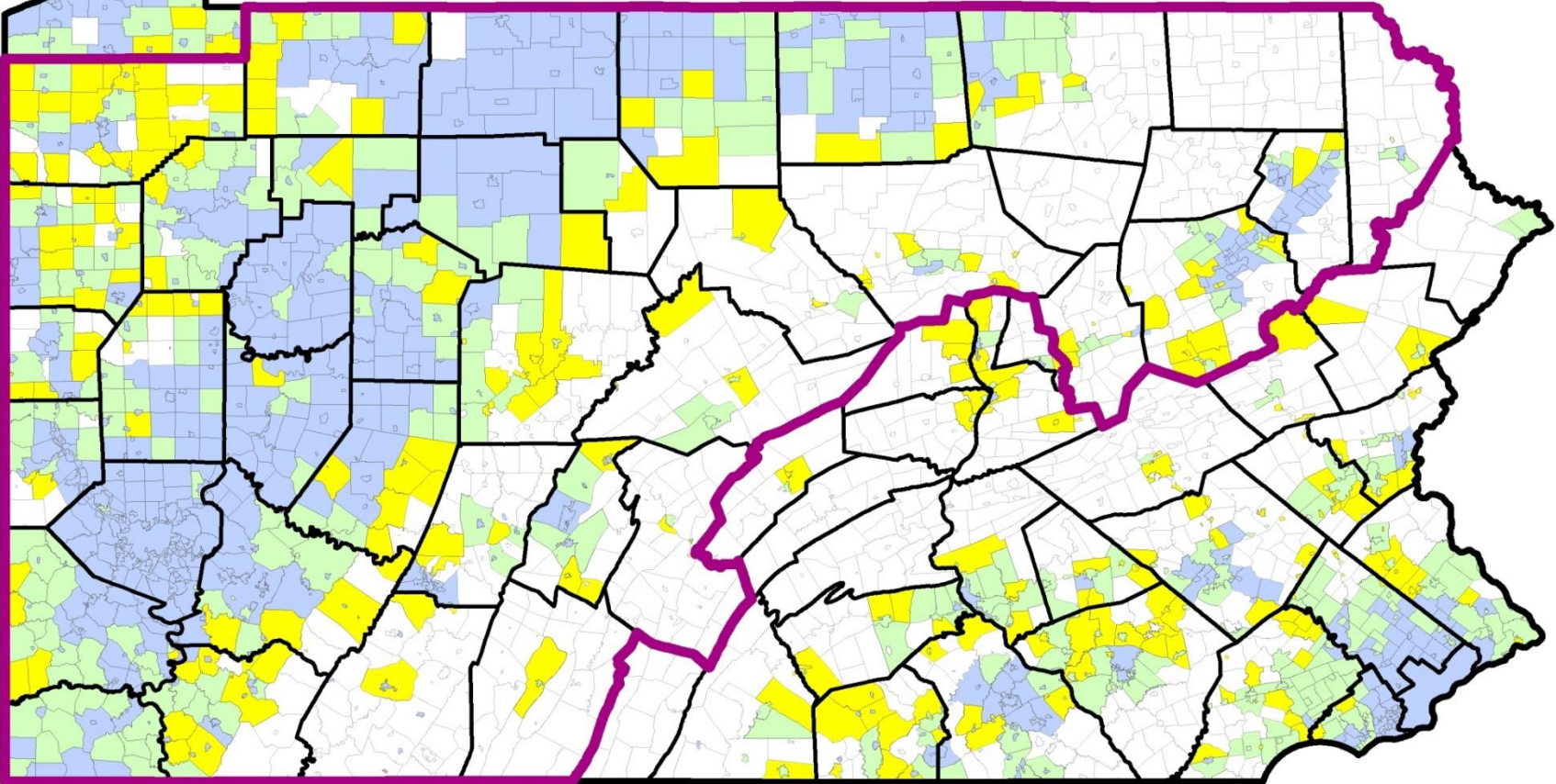
Homelessness in Rural Pennsylvania



Senate Resolution 29 –  
Natural Gas  
Distribution System  
Expansion



# Percent of Occupied Housing Units Heating with Utility Gas, 2007-11



**Statewide Average = 51.3%**

- Less than 10.0%
- 10.0% to 24.9%
- 25.0% to 49.9%
- 50.0% or more
- Counties with One or More Marcellus Shale Gas Wells

Data source: 2007-11 American Community Survey, U.S. Census Bureau

# Summary

- **The Pennsylvania Legislature is the Center's primary audience.**
- **The Center is recognized as the “go-to” agency for research and data pertaining to rural Pennsylvania.**
- **The breadth and depth of the Center's research and database reflect the reality of a very diverse rural state – rural is agriculture but so much more.**
- **Research does not always need to result in legislation.**
- **The products and services coming from the Center's practical, applied research and database provide significant Return On Investment for state government.**

*The Center for*



# *Rural Pennsylvania*

*A Legislative Agency of the Pennsylvania General Assembly*

**625 Forster Street, Room 902**

**Harrisburg, PA 17120**

**(717) 787-9555**

**[www.rural.palegislature.us](http://www.rural.palegislature.us)**

**Barry L. Denk, Director**

**[denkb@rural.palegislature.us](mailto:denkb@rural.palegislature.us)**

